



2024

# Homelessness Point-In-Time Count Results

SACRAMENTO CITY AND COUNTY CONTINUUM OF CARE

PREPARED BY SACRAMENTO STEPS FORWARD



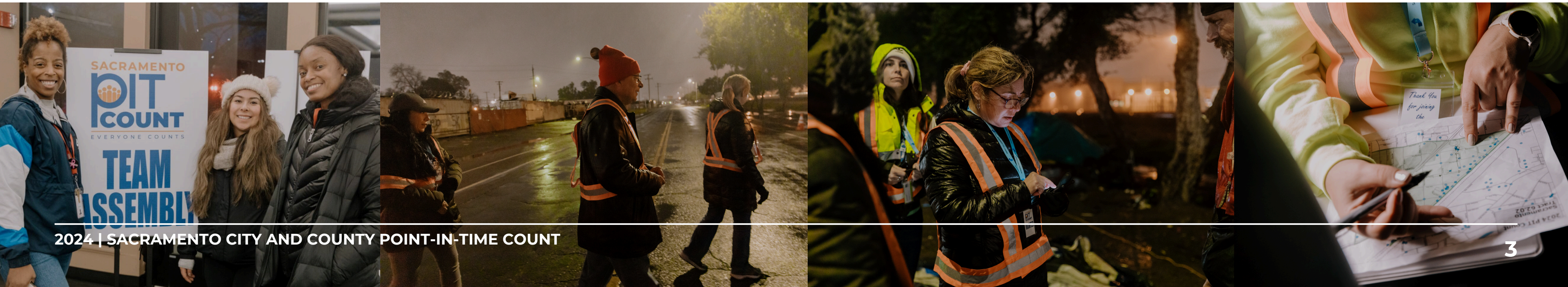
# What is the PIT Count?

- A “point-in-time” snapshot used to estimate homelessness in our community and better understand those who are experiencing homelessness
- Mandated by the Department of Housing & Urban Development (HUD) for federal funding
- Implemented by Continuum of Care agencies across the nation
- Contributes to the national Annual Homeless Assessment Report (AHAR)
- Informs policy-making and funding and provides insight on community services and support
- Takes place annually for temporary sheltered counts and every other year for unsheltered counts in Sacramento County.



# Sacramento January 2024 PIT Count

- Managed by the Sacramento City and County Continuum of Care & Sacramento Steps Forward
- Recruited more than 900 volunteers
- Collaborated with outreach staff to augment survey efforts
- Surveyed throughout Sacramento County





# Estimated Counts for a Point in Time in January 2024

## TOTAL HOMELESSNESS

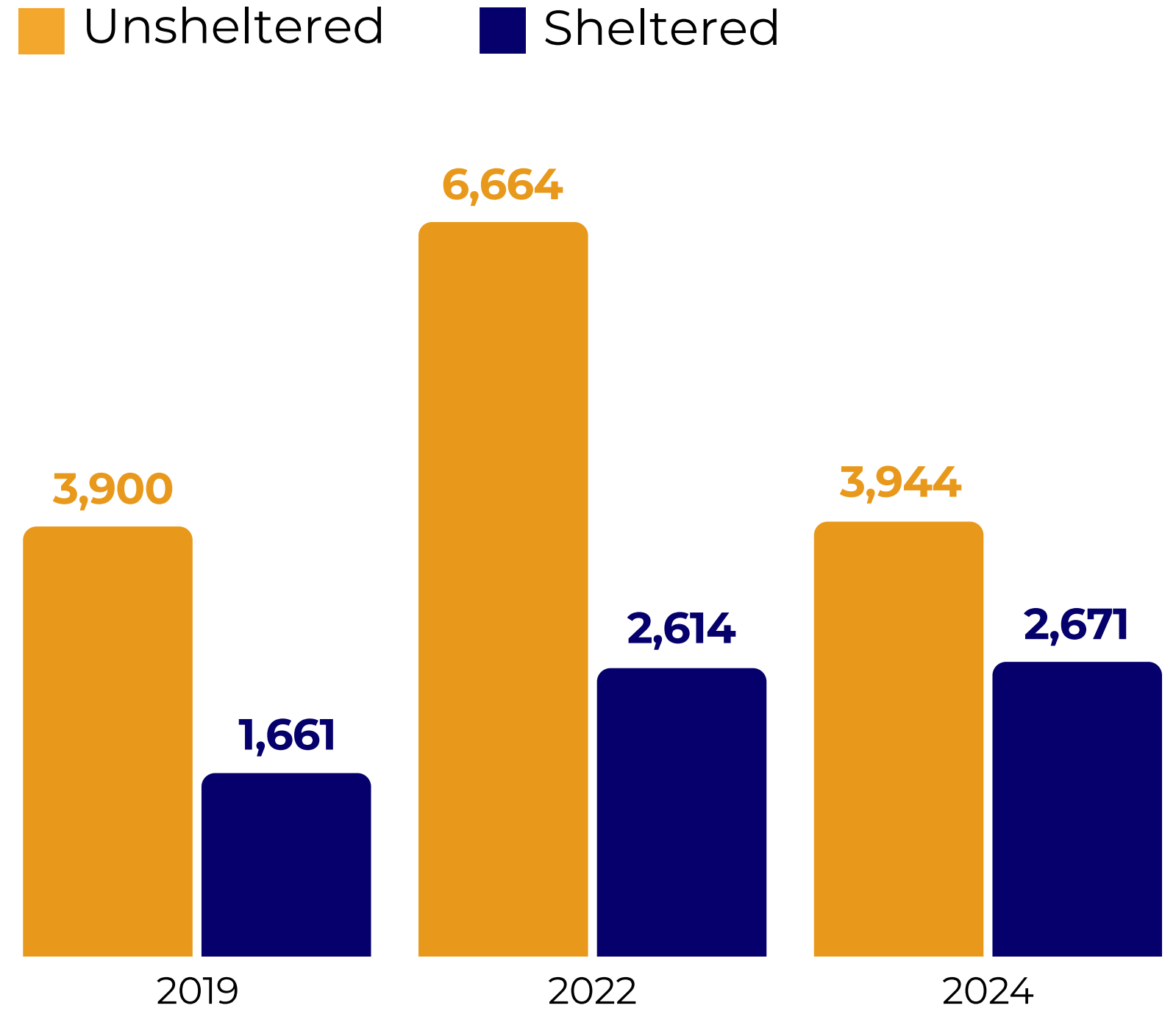
**↓29%** since 2022 | 6,615 people were experiencing homelessness.

## UNSHELTERED HOMELESSNESS

**↓41%** since 2022 | 3,944 people were living on the street, far fewer than in 2022.

## SHELTERED HOMELESSNESS

**↑2%** since 2022 | 2,671 people were being sheltered, a significantly larger proportion.

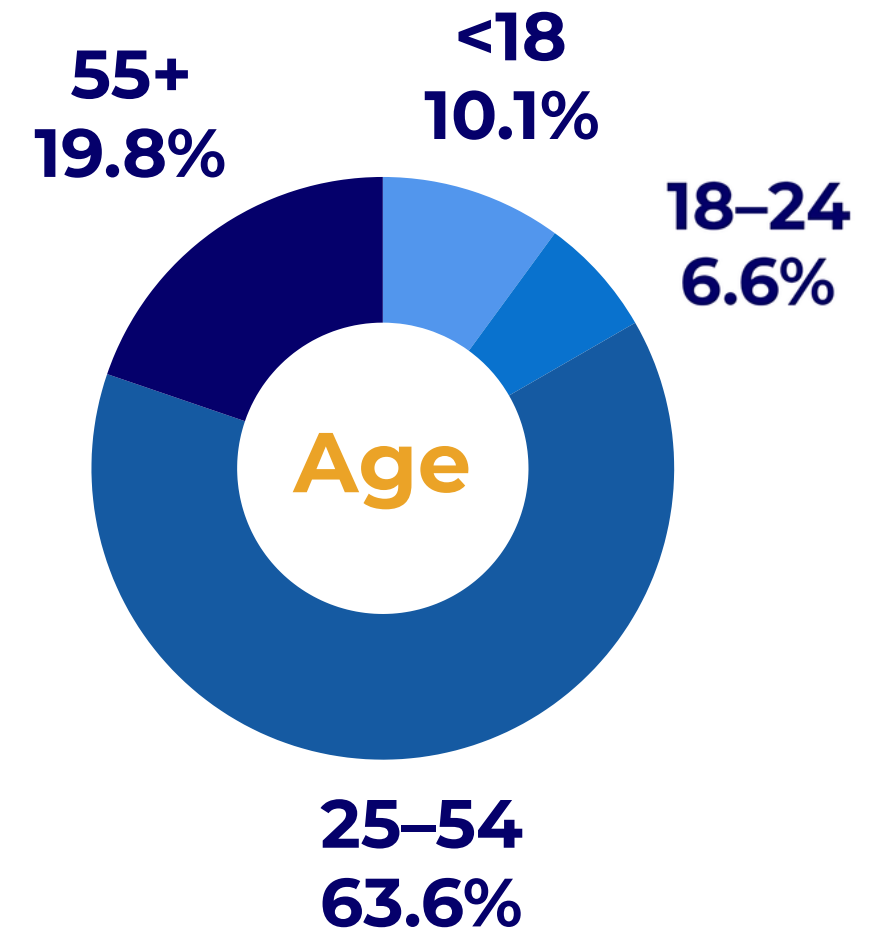
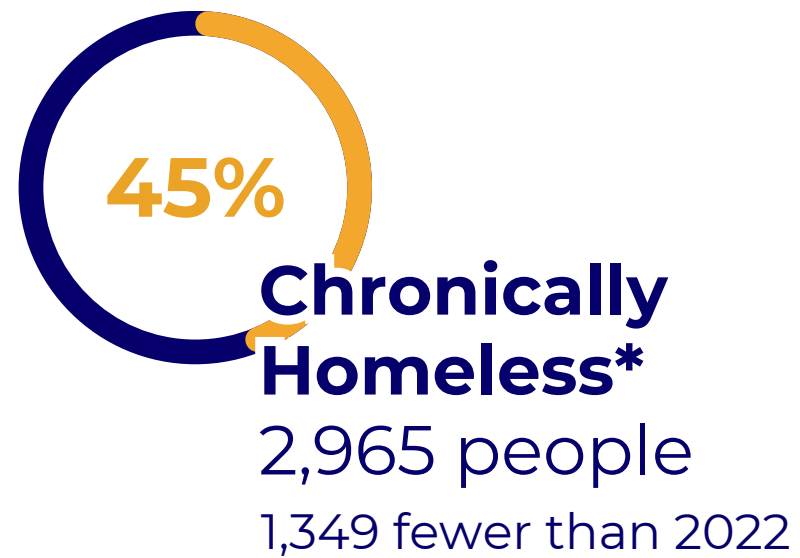
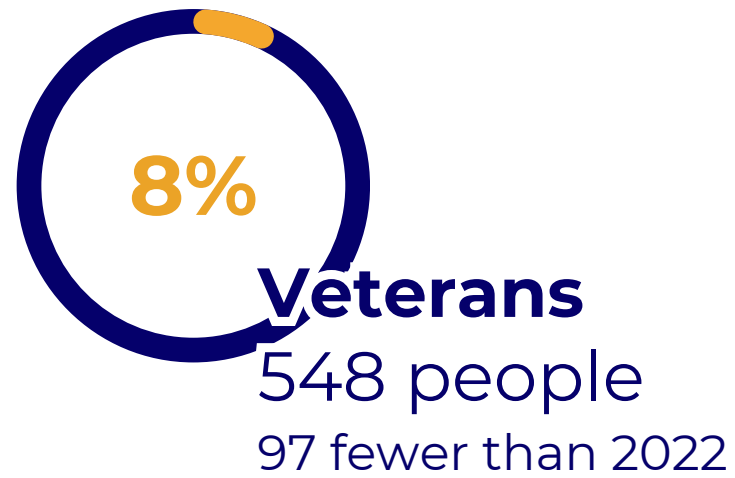
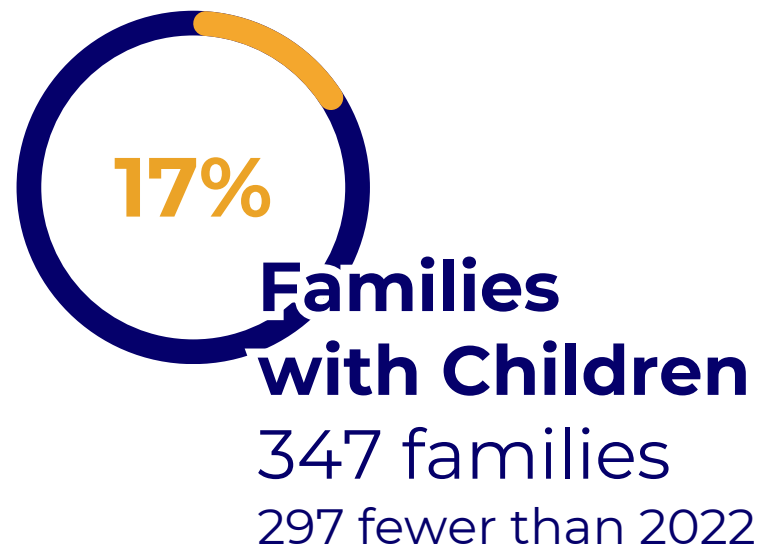


Overall homelessness count remains 19% above 2019 levels.



# 2024 Demographics

 **42 in every 10,000 residents** were experiencing homelessness.



Approximate likelihood of experiencing homelessness:

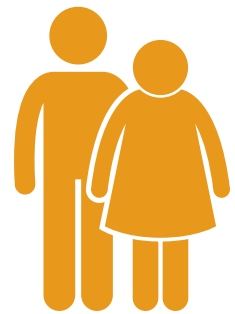
 **Black:**  
**3-4x** more likely

 **American Indian/Alaska Native:**  
**5-6x** more likely

\*Experienced homelessness for 1+ years and have a disability.

# Sheltered vs. Unsheltered Compositions

## Household Composition



### Adults with No Children

5,510 individuals in 5,138 households

**29%**

Sheltered

**71%**

Unsheltered



### Adults with Children

1,080 individuals in 347 households

**97%**

Sheltered

**3%**

Unsheltered



### Unaccompanied Minors

25 individuals in 23 households

**48%**

Sheltered

**52%**

Unsheltered

## Subpopulation Composition

### Chronically Homeless

**32%**

Sheltered

962 individuals

**68%**

Unsheltered

2,003 individuals

### Veterans

**40%**

Sheltered

217 individuals

**60%**

Unsheltered

331 individuals

### Adults with Serious Mental Illness

**17%**

Sheltered

461 individuals

**83%**

Unsheltered

2,327 individuals



# Unsheltered Distribution

Sacramento County Areas	Total Unsheltered	Percent of Total
City of Sacramento	3,053	77.4%
Unincorporated County	561	14.2%
Folsom	133	3.4%
Elk Grove	83	2.1%
Citrus Heights	62	1.6%
Rancho Cordova	52	1.3%

\*Galt and Isleton had counts of 0.

# Insights from survey responses during the PIT Count:

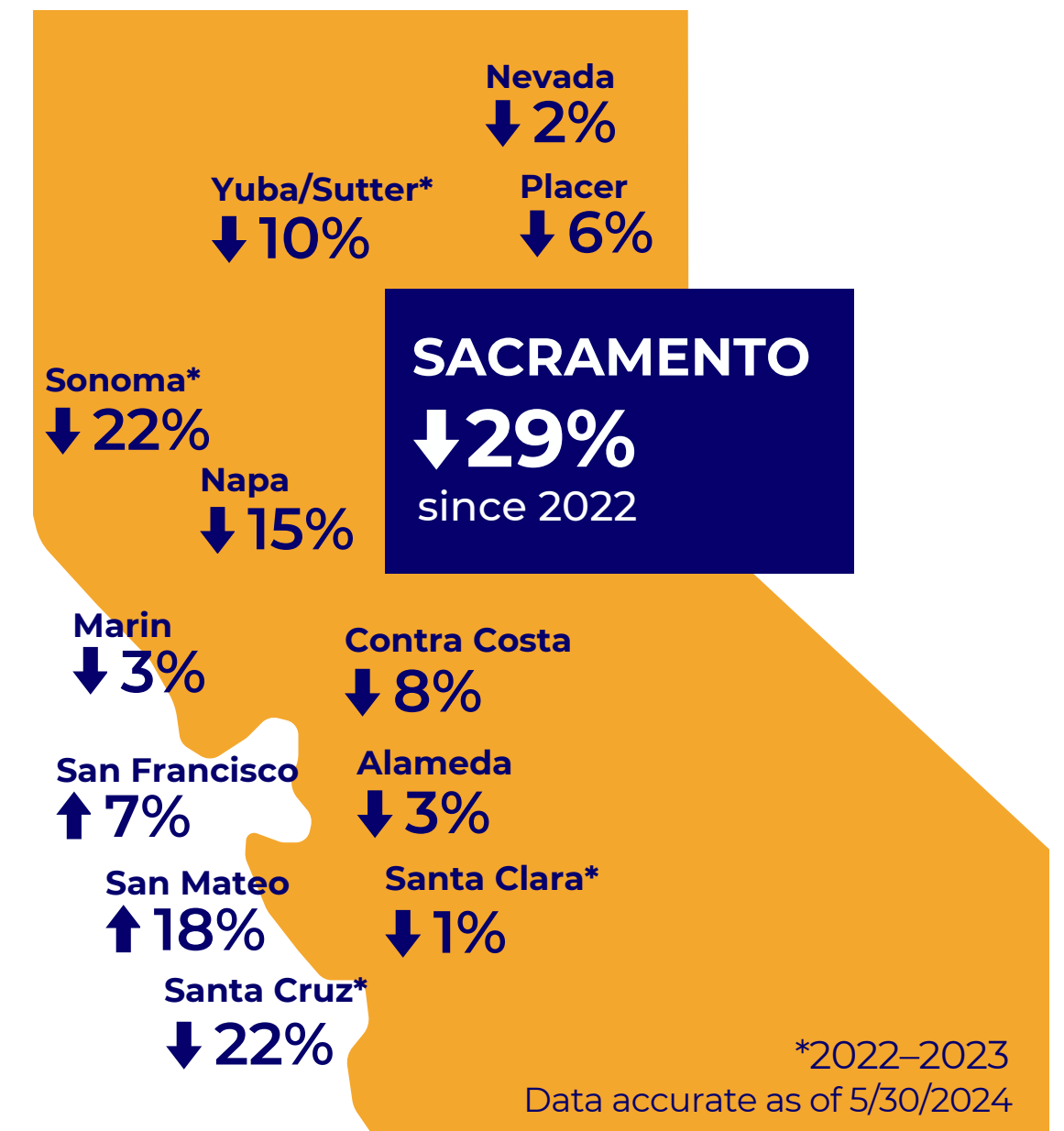
- 90% had been Sacramento County residents for more than six months, with 62% either originating from or being lifelong residents.
- 74% had to move and find a new sleeping location within the last two months.
- 68% had been experiencing homelessness for at least two years.
- 58% believed the number one thing that our region could do to better to help them was increase affordable housing.
- 50% were experiencing homelessness for the first time.
- 25% had been placed in foster or group homes before turning 18.





# Homelessness is declining in Sacramento County and much of Northern California.

- Most Sacramento and Bay Area counties have seen declines since 2022
- Sacramento County's decline is one of the most significant, reversing its previous count, which was among the highest percent increases in the state
- Sacramento County's total change from 2019 to 2024 (+19%) aligns with the statewide average among counties that have reported results
- More people are being sheltered and housed permanently in Sacramento County
- Unsheltered homelessness is just 2% above 2019 levels



# Collaboration and investment have increased across the homelessness response system.

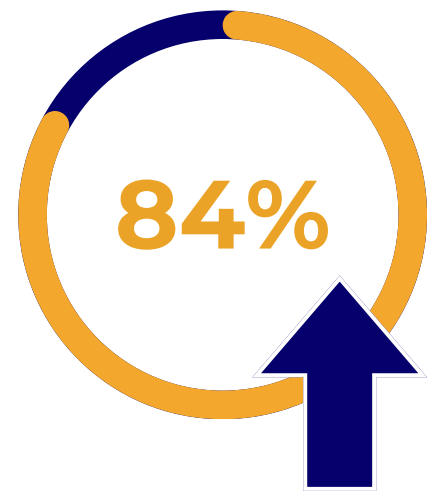
- \$120M in State funding through Homelessness, Housing and Assistance (HHAP) grants since 2019
- Project Roomkey and Homekey funding during COVID-19
- Formalized City-County Partnership starting in 2022
- Local Homeless Action Plan implemented in 2023
- Coordinated Access System launched in 2023
- Investments in shelters and affordable housing
- Increased behavioral health services and coordination
- Expanded prevention efforts





# Capacity has increased.

The Sacramento region has invested significant resources in increasing capacity to prevent and end homelessness, including in shelter, rehousing, and permanent supportive housing.



**3,527 Shelter and Transitional Housing Beds**

Increase of 1,611 beds 2020–2024



**963 Rapid Rehousing Slots**

Increase of 191 slots 2020–2024



**4,343 Permanent Supportive Housing Units**

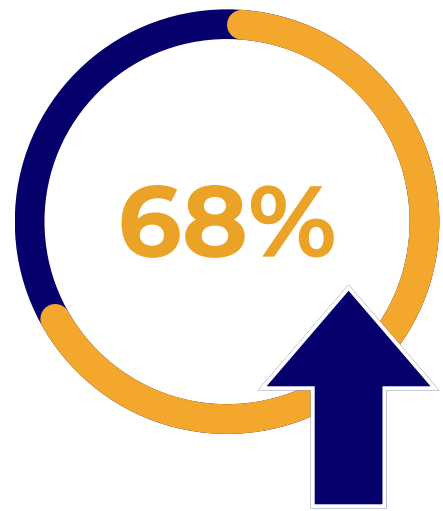
Increase of 1,001 units 2020–2024

Source: [bit.ly/ssfHIC](https://bit.ly/ssfHIC)

# System outcomes have improved.

Thanks to the investments made in capacity, outcomes have significantly improved across the homelessness response system, with increases in shelter counts, outreach exits, and permanent housing placements.

Source: [bit.ly/HUDSPMs](https://bit.ly/HUDSPMs)



**7,360 clients sheltered in 2023**

Increase of 2,988 sheltered clients 2019–2023 reflecting increases in year-round beds transitioned from COVID-19 temporary shelter.

11% Increase 2022–2023



**778 successful street outreach exits in 2023**

Increase of 178 exits 2022–2023



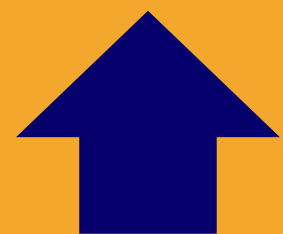
**2,421 permanent housing placements in 2023**

Increase of 675 placements 2022–2023



# The rental market has improved, making housing more accessible.

- Rents and vacancy rates—the strongest predictors of homelessness in US cities—softened in Sacramento County between 2022 and 2024
- Rental vacancy rates are up by 58% since 2022 (from 3.3% to 5.2%)
- Average one-bedroom rents are down 3% since 2022 (from \$1,371 to \$1,328)

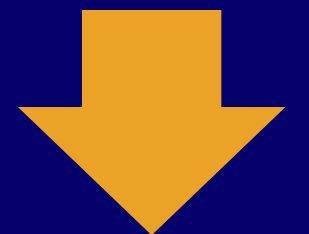


**Vacancy Rates**

**58%** since 2022

**Rental Rates**

**3%** since 2022



Source: [bit.ly/RentalMarketEst](https://bit.ly/RentalMarketEst)

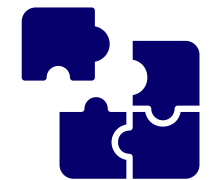
# Investments and partnerships are impactful. Sustained and increased engagement are needed.



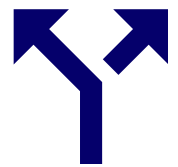
Commitment to going “All In” on regional plan actions



Continued and consistent federal, state, and local funding.



Integration of services throughout the homelessness response system.



Greater focus on strategies to prevent first-time experiences of homelessness.



Affordable permanent housing—survey respondents’ no. 1 recommendation.