

# The Local Homeless Action Plan PROGRESS REPORT

THROUGH SEPTEMBER 30, 2023

The Local Homeless Action Plan (LHAP) facilitates a system-focused, equitable framework using an “All In” approach. This report includes a summary of the progress made within the LHAP overall and within each of the six Core Strategies, as well as a few statistics demonstrating the LHAP’s impact.



## BEDS

135 new shelter beds opened, with another 461 under development and 120 planned



## UNITS

143 permanent supportive housing units opened, with another 574 under development and 327 planned



## OUTREACH

Full staffing for 10 engagement teams within the City of Sacramento



## PREVENTION

683 households prevented from entering homelessness so far this year



## ACCESS

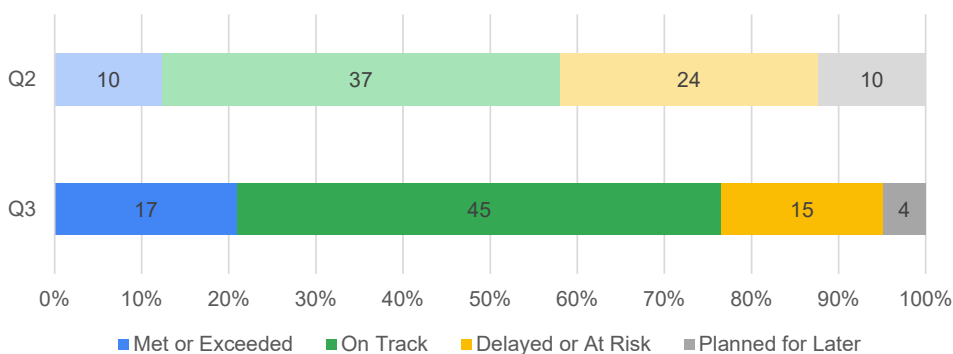
16 Problem-Solving access points (PSAPs) established



## EXPERTISE

4 housing problem solving trainers with lived expertise of homelessness

## OVERALL ACTIVITY PROGRESS



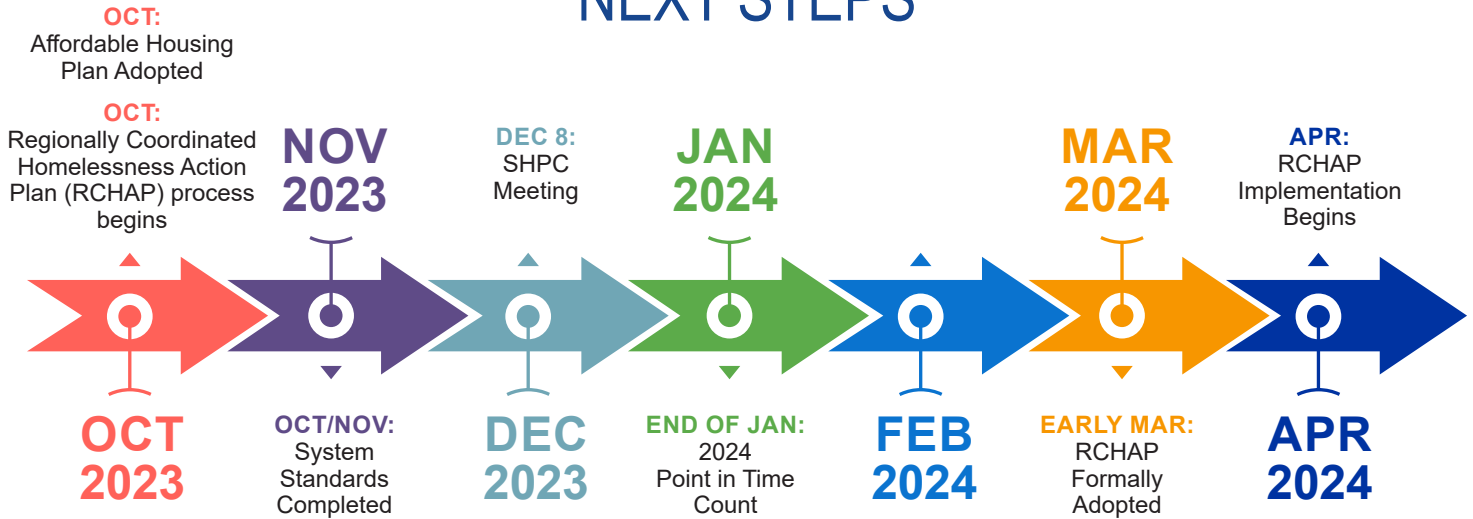
Between Q2 and Q3, the percentage of activities completed or on track increased from 58% to 77%.

**58% → 77%**

FULL REPORT:  
[bit.ly/LHAPprogress](https://bit.ly/LHAPprogress)



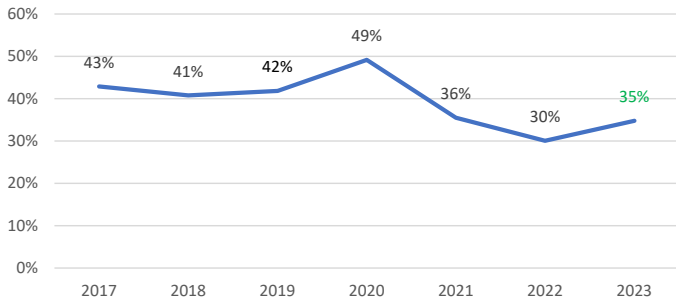
# NEXT STEPS



# LHAP IMPACT

## Housing Placement Rate Increases, But Misses Target

Percent Permanent Housing Exits from ES, SH, TH, & PH-RRH

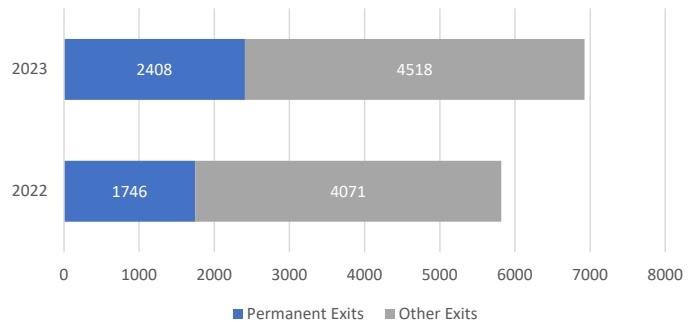


In Federal Fiscal Year 2023 (from October 2022 through September 2023), the percentage of exits from ES, SH, TH, and PH-RRH programs to permanent destinations rose from its post-pandemic low of 30% to 35%, but missed the LHAP target of 42%.

Numbers are as reported using HUD's System Performance Measures. These include only verified housing placements, so actual housing placements were higher by an unknown amount.

## Significantly More People Placed in Housing

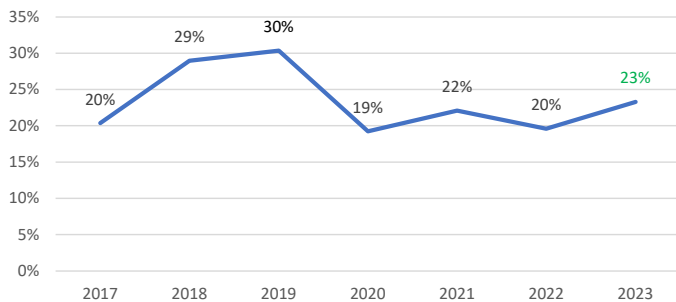
Persons Who Exited ES, SH, TH, & PH-RRH



The number of people placed in permanent housing increased by 38% between 2022 and 2023, from 1,746 to 2,408.

## Street Outreach Exit Success Rate Increases Slightly

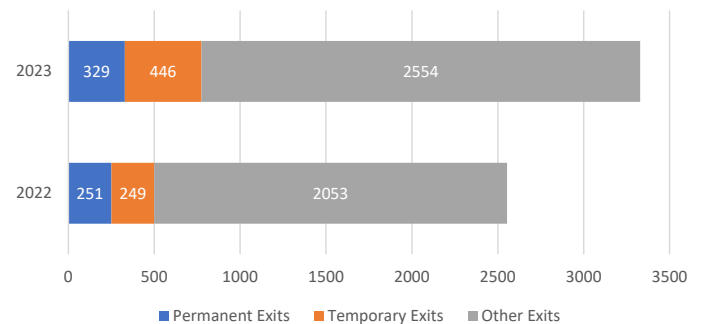
Percent Exits to Permanent or Temporary Housing from Street Outreach



In Federal Fiscal Year 2023, successful street outreach exits—those that went to permanent or temporary housing—rose slightly to 23%, their highest level since before the pandemic.

## Total Successful Street Outreach Exits Grow Sharply

Persons Who Exited Street Outreach



The total number of people exiting street outreach to permanent or temporary housing grew 55% between 2022 and 2023, from 500 to 775.