



A Collaborative Initiative  
to Solve Sacramento's  
Homeless Crisis

---

# **All In Sacramento Evening Feedback Session**

January 31, 2024

# Welcome & Introductions

# Welcome

---



Lisa Bates  
Chief Executive Officer  
Sacramento Steps Forward

# Today's Facilitators

---

Connor Johnson  
Consultant Team

Kira Zylstra  
Consultant Team

Tom Albanese  
Consultant Team

Members of the Partners with  
Lived Expertise Committee  
(PWLEC)

# Agenda

---



**Welcome & Introductions**

**Community Agreements**

**RCHAP Plan Solutions**

**Feedback on Plan**

**Report Out on Feedback**

**Communications Plan for All In Sacramento**

**Close Out**

# Feedback During Sessions



Suggestion Box



# Who's in the room?



**Elected  
Officials**

**Faith  
Partners**

**Service  
Providers**

**Adjacent  
System  
Partners**

**First  
Responders  
/Healthcare  
Provider**

**Landlords/  
Property  
Managers**

**Funders**

**City/  
County  
Staff**

**Other  
Community  
Partners**

# Acknowledgements & Agreements



# Engagement Agreements Part 1

---



## GROUP AGREEMENTS:

- One Mic (one person sharing at a time)
- Ouch, Oops, Sorry, Educate (loving accountability)
- Believe the Best in One Another (we're trying out here!)
- You are not immune to your own biases (check yourself)
- Give every idea one minute of life (be open minded!)
- Respect pronouns (ask, y'all!)

# Engagement Agreements Part 2

---



## GROUP AGREEMENTS:

- Your art has power, use it wisely (no unkind words or putdowns)
- Be present with your art and with the people in this room
- Throw glitter not shade (BE KIND)
- Use person first language (“people experiencing homelessness”)
- Youth & Young Adults > Kids
- Try not to use acronyms (wth are you saying??)
- Don't yuk my yum

# Engagement Agreements

---



**ANY ADDITIONAL AGREEMENTS TO ADD?**

# Commonly Used Acronyms...

---



# All In Sacramento Plan Solution Direction

# Background + Context



*All In Sacramento*

Is a region-wide approach to...



Update the local homelessness action plan (LHAP)

Adopt a region-wide commitment and path to addressing and ending homelessness.

# Updating the Plan



Building upon past planning efforts to make updates for the next iteration of Sacramento's plan to address homelessness:

In Dec, we launched a **series of workshops** to gather input

We are **engaging in a critical review** process of current efforts

Identifying and addressing **known gaps and thoughtful refinements** to the current plan

Setting a **clear and achievable path** to preventing and ending homelessness in the region

With a **comprehensive framework** for measuring progress

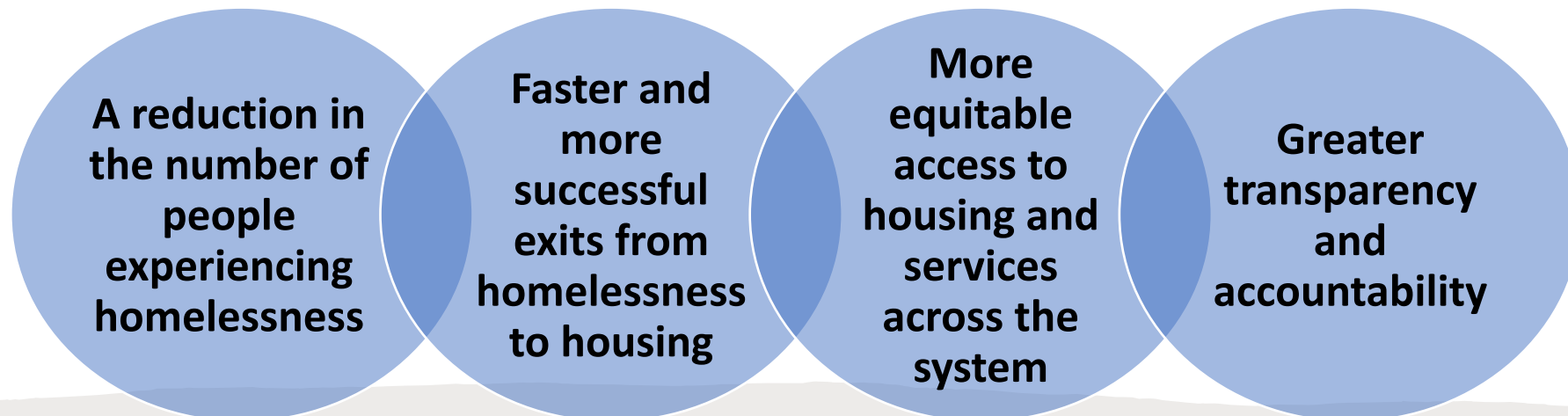
# Updating the Plan



**Improve and build upon the progress made under Local Homeless Action Plan (LHAP) to:**

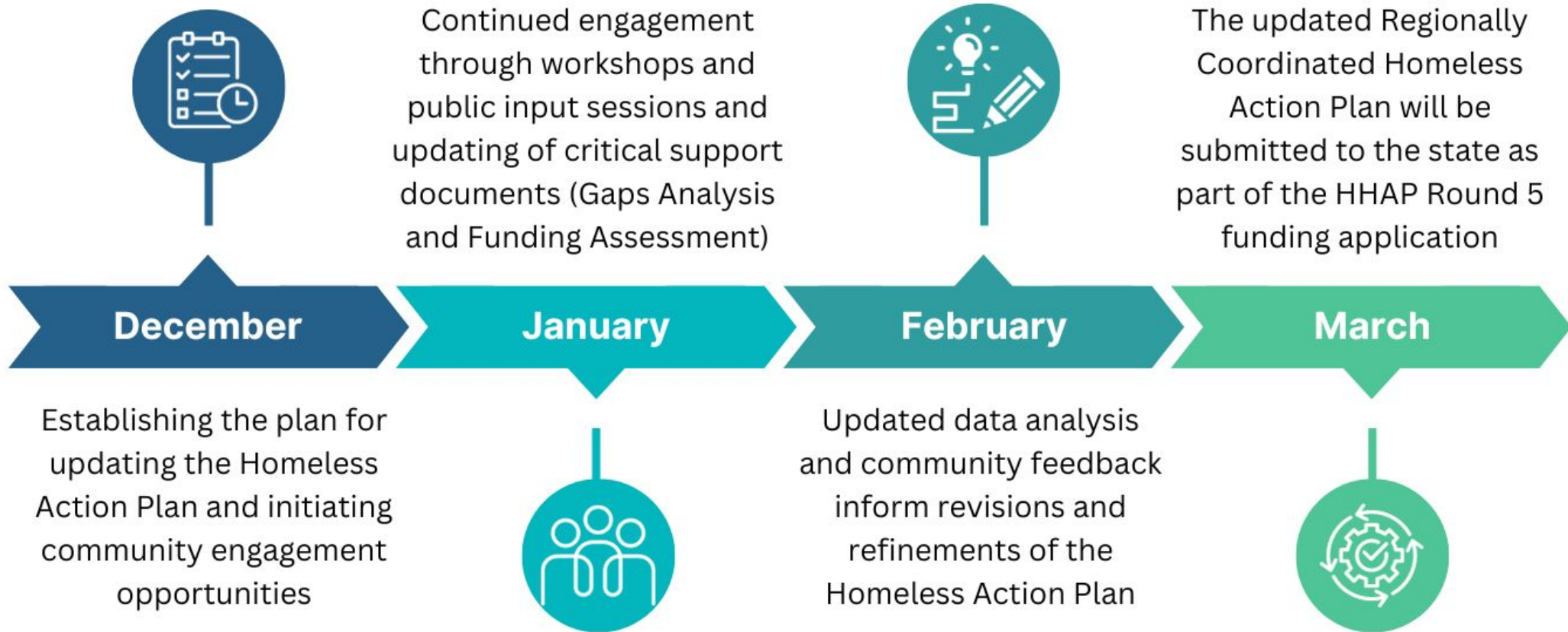
- Secure crucial Homeless Housing, Assistance and Prevention (HHAP) state funding
- Further develop and scale up impactful, county-wide solutions

**So that we can achieve:**

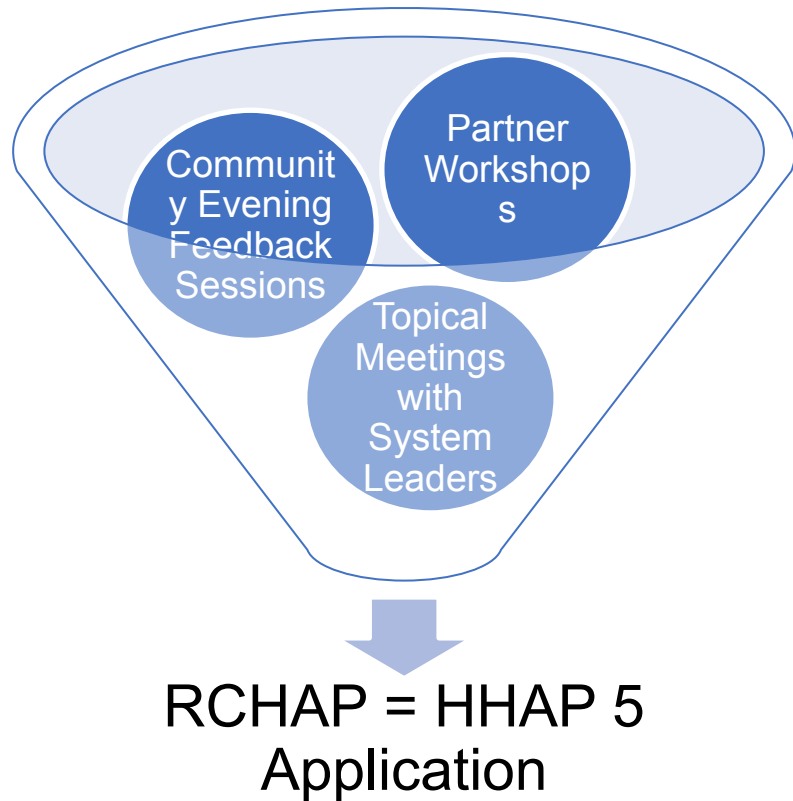




# All In Plan Timeline



# Engagement Activities



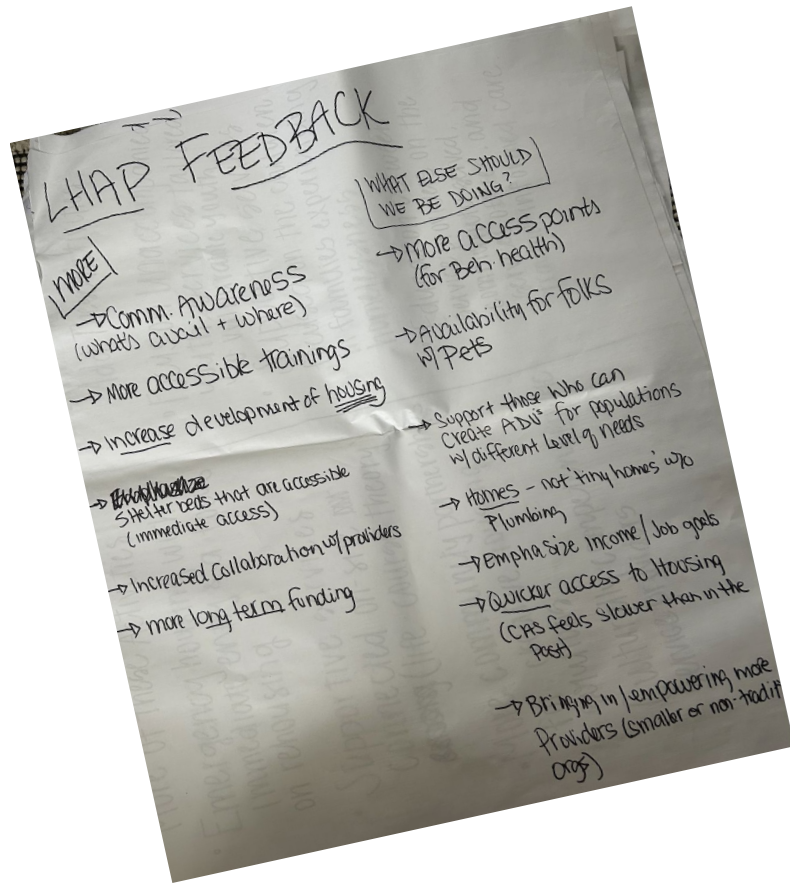
## Progressive Feedback

**Workshop 1:** Updates on Work, General Feedback

**Workshop 2:** Focused Conversations on Key Actions

**Workshop 3:** Review Draft Plan Components

# Feedback from December



## All Feedback from Session 1 & 2:

- Incorporated into Solution Refinement
- Identified Gaps for Guiding Principles Integration

# VISION

Homelessness in Sacramento is rare, brief, and non-recurring

Person-centered, trauma-informed regional response system



## SOLUTIONS



1. Build and scale a regional Coordinated Access System (CAS)



2. Ensure current and new emergency shelter and interim housing is focused on rehousing



3. Increase permanent housing opportunities



4. Expand prevention and diversion resources



5. Invest in community and service delivery capacity-building and training



6. Ensure adequate behavioral health services

Evidence based best practices

Racial equity

Partners with lived expertise

Data

Collaboration

# FOUNDATIONS

# Long-Term Goal: Transformed System



Estimated **ANNUAL** Number of People Who Experience **Literal Homelessness\*** in Sacramento = **16,500 to 20,000**

\*Represents those in emergency/temporary shelter or unsheltered

## Business as Usual

Emphasizes crisis response once a person becomes homeless



Leads to increasing need for shelter and other crisis responses and less capacity to prevent or quickly end homelessness for people.

## Transformed System

Emphasizes targeted prevention, diversion, rehousing and permanent housing assistance, reducing need for crisis services



Leads to less people experiencing homelessness and more people receiving the help they need to quickly end their homelessness and remain housed.

Eliminates or significantly reduces the need for additional emergency shelter capacity.

# What are we building?

---



**Framework +  
Action Plan +  
Implementation**

**=**

**Sustainable Change**

# Solutions and Sub-Solutions

---



## *Coordinated Access System*

***Sub-Solution:*** Increase targeted participation in homeless crisis response services.

***Sub-Solution:*** Grow and embed problem-solving/diversion in all system access sites, safe grounds, respite centers and emergency shelters

# Solutions and Sub-Solutions

---



## *Coordinated Outreach*

***Sub-Solution:** Provide comprehensive, coordinated, county-wide street outreach that supports successful resolution of unsheltered homelessness*



# Solutions and Sub-Solutions

---



## *Emergency Shelter and Interim/Transitional Housing*

***Sub-Solution:** Increase emergency shelter and interim housing capacity to meet the current needs of people experiencing literal homelessness.*

***Sub-Solution:** Ensure emergency shelter, interim housing, and transitional housing programs are high quality and effective in resolving homelessness*

# Solutions and Sub-Solutions

---



## *Rehousing Assistance*

***Sub-Solution:** Increase and improve rehousing assistance to improve permanent housing outcomes*

***Sub-Solution:** Expand access to existing and new non-homeless dedicated housing units in market and subsidized programs.*

# Solutions and Sub-Solutions

---



## *Permanent Supportive Housing*

***Sub-Solution:** Increase the stock of homeless-dedicated permanent supportive housing units and other homeless dedicated affordable housing vouchers/units with ongoing services.*

# Solutions and Sub-Solutions

---



## *Diversion & Prevention*

***Sub-Solution:** Establish and continue to scale a community-wide coordinated prevention system model to identify and assist people who are housing insecure, including people imminently at-risk of literal homelessness.*

# Solutions and Sub-Solutions

---



## *Capacity Building & Training*

***NEW Sub-Solution:*** Attract new staff from historically under-resourced communities and partners with lived expertise.

***Sub-Solution:*** Create an inclusive & supportive working environment to retain the current workforce

***Sub-Solution:*** Further develop system-wide training opportunities and related training infrastructure to support initial and ongoing staff development and improve system and program performance.

***Sub-Solution:*** Increase community stakeholder support for countywide homelessness activities through increased and improved engagement.

# Solutions and Sub-Solutions



## Integrated Services: Behavioral Health

***Sub-Solution:*** Improve staff knowledge and skills in both housing crisis response and behavioral health care systems, especially in key system navigator/ intermediary roles (e.g., Housing Specialist, Peer Support Specialist, Outreach Specialist).

***Sub-Solution:*** Improve and increase timely and direct access to behavioral health care supports for people experiencing homelessness both in locations where they are staying and at service locations.

***Sub-Solution:*** Improve and increase timely and direct access to prevention and homeless services for people engaged in behavioral health services.

***Sub-Solution:*** Improve and increase access to mobile crisis response and multi-disciplinary supports for people with more complex or severe needs while they receive outreach, shelter, rehousing, and housing stabilization services.

# Solutions and Sub-Solutions

---



## Integrated Services: Other Cross-System Partnerships

***NEW Sub-Solution:*** Ensure alignment and coordination across sectors including the development of cross-system strategies to prevent and end homelessness for individuals with multi-system involvement.

***NEW Sub-Solution:*** Increase coordination with healthcare systems, hospitals and managed care plans to ensure housing is a healthcare intervention.

***NEW Sub-Solution:*** Increase access to public benefits.

***NEW Sub-Solution:*** Increase access employment opportunities.

# Feedback Opportunity



# Table Discussions

---



- **Lingering Questions?**
- **Comments?**
- **Feedback?**



# Feedback Report Out

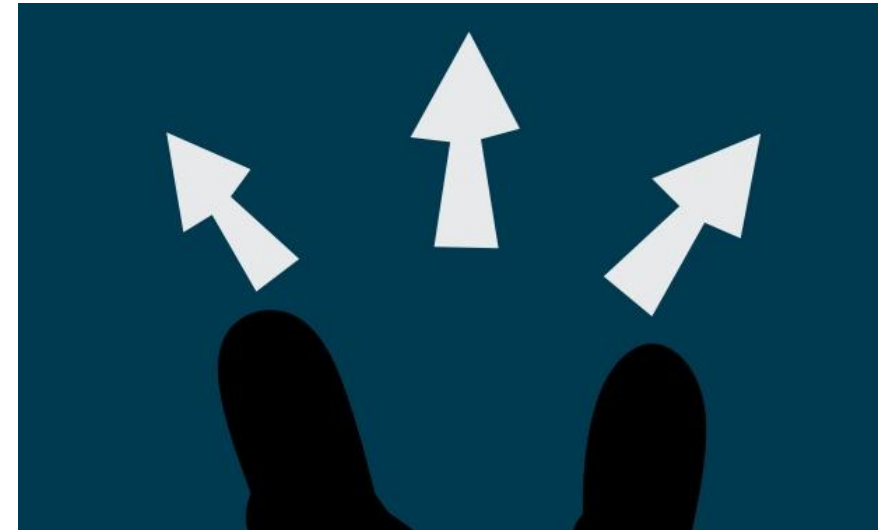
# Communications Plan for All In Sacramento

# Discussion Questions

---



- What should we be doing to better communicate about homelessness (the challenges, the solutions, and the progress)?
- What information is most needed and what is the best way to get it out there?



# **Close Out: Next Steps on Engagement and Feedback Process**

# Reminder: Key Dates



# Ways to Provide Feedback

All In Sacramento Landing Page: <https://sacramentostepsforward.org/rchap/>

Please call 2-1-1 and press 8 for homelessness information and services near you.     

 Home About ▾ Continuum Of Care ▾ Data ▾ Initiatives ▾ CAS ▾ Events & News ▾ [DONATE NOW](#)

  
**The Regionally Coordinated Homelessness Action Plan**

The Regionally Coordinated Homelessness Action Plan (RCHAP) is the next step in our efforts to collaboratively and strategically address homelessness. Building off the progress made under the Local Homeless Action Plan (LHAP), this plan secures crucial Homeless Housing, Assistance, and Prevention (HHAP) state funding and defines impactful, region-wide solutions. If we go All In, we hope to achieve:

- A Reduction in the number of people experiencing homelessness
- Faster pathways to housing and rehousing
- More equitable access to housing and services across the system
- Greater transparency and accountability across the entire system

[Get Involved](#)

# Closing Thoughts



Questions?

Comments?





**Thank you!**

**See you on Jan 31!**