

What is a Homeless Continuum of Care?



A Continuum of Care (CoC) is a regional or local planning body that coordinates housing and services to meet the specific needs of people experiencing homelessness as they move to stable housing and maximize self-sufficiency.

Who comprises the Sacramento CoC?

The Sacramento City and County Continuum of Care (Sacramento CoC) is comprised of a **25-member board** which includes representation from local government, homeless services providers, people with lived experience, and the broader community of businesses, advocates, and faith-based groups.



Where is the Sacramento CoC situated in the community?

The Sacramento CoC is situated at a nexus for homelessness related efforts and is both informed by and helps to inform the work of our community partners.



*In Sacramento, the CoC has designated SSF as the CoC Lead Agency serving as the Collaborative Funding Applicant, Homeless Management Information System (HMIS) Lead Agency, and operator for the Coordinated Entry System.

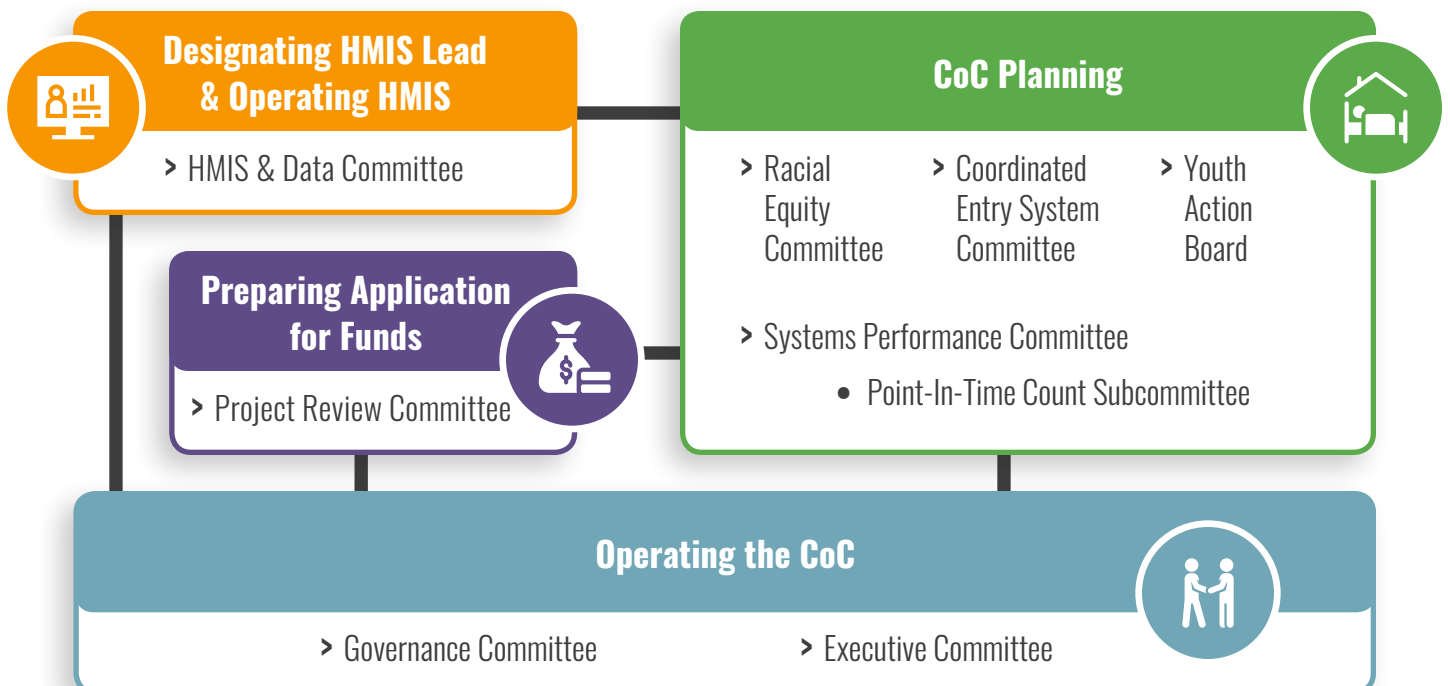
What does the Sacramento CoC do?

The work of the Sacramento CoC is organized into **4 main components**:



What committees comprise the Sacramento CoC?

The Sacramento CoC contains **9 committees**, each focused on supporting and implementing the work of the CoC.



Current Efforts of the Sacramento CoC

For the year **2020/21**, the Sacramento CoC has actively engaged in many efforts to address homelessness, some of which are highlight below:

2020/2021



Funding Administered by the Sacramento CoC



The Sacramento CoC receives and administers both **Federal and State funding** to support local efforts to more effectively and efficiently address homelessness in a variety of capacities.

FEDERAL FUNDING *		
Permanent Housing	HMIS Database Management	Planning Activities

*United States Department of Housing and Urban Development Continuum of Care

STATE FUNDING *		
COVID-19 Response	Planning Activities	Local Programming

*The Business, Consumer Services and Housing Agency (BCSH)