

Improving Coordinated Entry: Optimizing Access to Housing and Services

Peter Bell, Coordinated Entry System Manager



Welcome - Please come in we'll start shortly

Feel free to add your name, pronoun and agency to the chat



Agenda

1. Background and Overview - 20 minutes
2. Panel Discussion - 30 minutes
3. Audience Q&A - 15 minutes
4. Feedback Session - 15 minutes



Acronyms

HRS = Homeless Response System

CoC = Continuum of Care

CE / CES = Coordinated Entry / Coordinated Entry System

CESC = Coordinated Entry System Committee

VI-SPDAT = Vulnerability Index - Service Prioritization Decision Assistance
Tool

RAPS = Rapid Access and Problem-Solving

PSH = Permanent Supportive Housing



What is Coordinated Entry?

The Coordinated Entry System (CES) facilitates the coordination and management of resources and services through the crisis response system.

CES allows users to efficiently and effectively connect people to interventions that aim to rapidly resolve their housing crisis.

CES works to connect the highest need, most vulnerable persons in the community to available housing and supportive services equitably.

Coordinated Entry Evaluation - Key Takeaways

What did we learn?

- Access to services within the homeless response system (HRS) is complicated and uncoordinated;
- There are too few resources available through coordinated entry; and
- Analysis of the VI-SPDAT assessment indicates areas of racial bias/preference and our community's use of this assessment needs to be reevaluated.



CESC's response to the CES Evaluation: 4 Goals

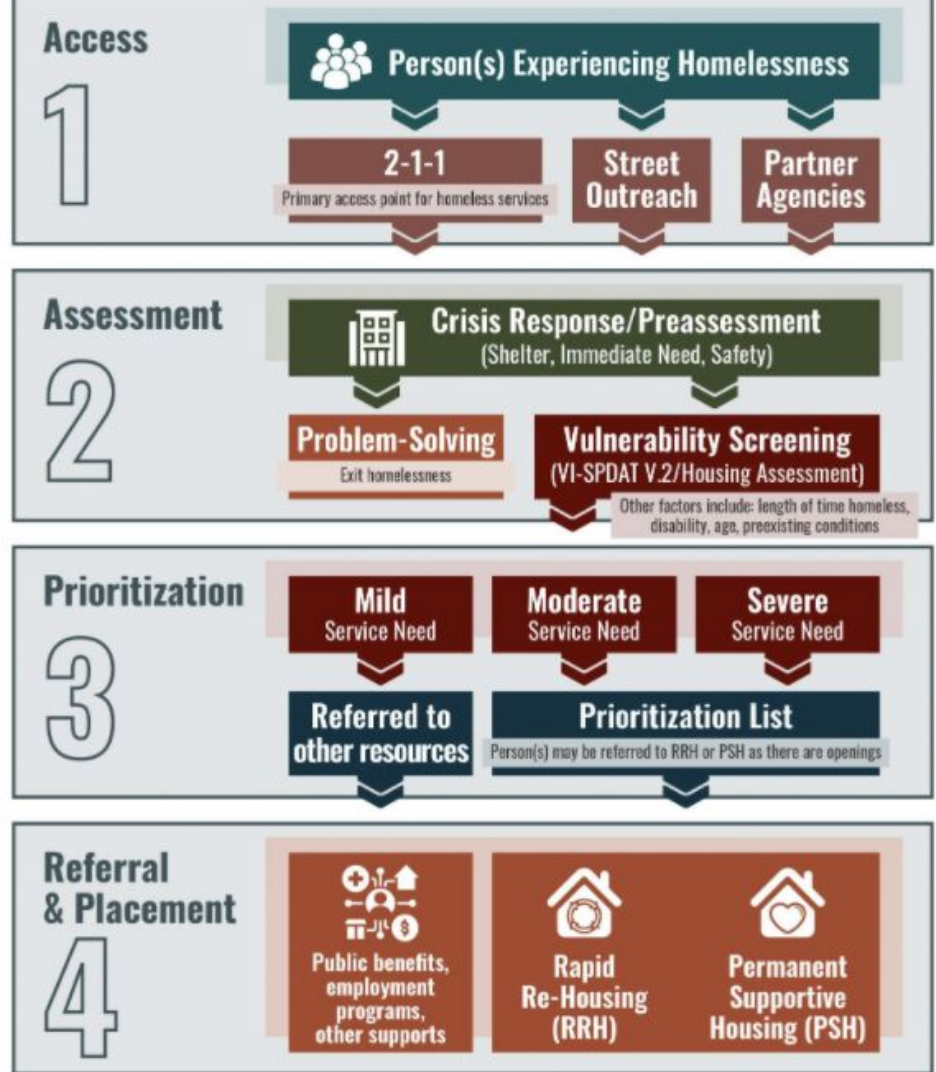
1. Make information on how to access the system publicly available & easily accessible;
2. Expand the amount and types of housing and resources available through coordinated entry, including outreach and navigation centers;
3. Collaborate with the newly formed Racial Equity Committee and people with lived experience to improve or change the VI-SPDAT assessment process; and
4. Make coordinated entry easier to understand and user-friendly *for people experiencing homelessness*

Coordinated Entry Investments & Opportunities

1. RAPS - two year pilot investing in improving access to the CES and providing problem-solving resources - *Going live June 1, 2021*
2. Standalone Survivor System - *Going live July 1, 2021*
3. Emergency Housing Vouchers - *Summer 2021*
4. “No Place Like Home” - New Behavioral Health PSH *Summer 2022*
5. Shelter Coordination
6. Case Conferencing



4 Core Elements of Coordinated Entry





ACCESS

Panel Discussion

Please use the Zoom chat feature to privately message Tiffani Reimers questions you would like the panel to answer